

Santorini Eruption Radiocarbon Dated to 1627–1600 B.C.

Walter L. Friedrich,^{1*} Bernd Kromer,² Michael Friedrich,^{2,3} Jan Heinemeier,⁴ Tom Pfeiffer,¹ Sahra Talamo²

The Minoan eruption of Santorini (Thera) in Greece spread a huge fan of volcanic ash deposits over the Eastern Mediterranean region. Worldwide effects have been ascribed to the eruption: sulphuric acid and fine ash particles in the Greenland Ice Sheet, climatic disturbances in China, and frost damage to trees in Ireland and California. On Santorini, the eruption produced a thick layer of pumice and ash (fig. S1) (1) that buried flourishing Bronze Age settlements. Left behind is Akrotiri, a “Pompeii of the ancient Aegean,” which is currently being excavated (2). Precise dating of this eruption is important, because the tephra layer acts as a universal time marker of Late Bronze Age contexts in the Eastern Mediterranean region.

On the basis of linkages between the Aegean and Egyptian cultures (3), some archaeologists have traditionally placed the Minoan eruption around the mid- to late-16th century B.C., whereas evidence from ice cores, tree rings, and a large number of radiocarbon dates favor a date 100 years earlier (4). Radiocarbon dates on short-lived organic material, like seeds, from Akrotiri on Santorini have been of limited precision because of a plateau in the radiocarbon calibration curve for part of this time trajectory. Even by applying refined statistical analysis on the most suitable series of radiocarbon dated samples grouped by archaeological evidence, it has not yet been possible to date the eruption of Santorini more precisely than ranging (2 σ) from 1663 to 1599 B.C. (5).

We have found (6) a branch from an olive tree that was buried alive in tephra on Santorini, with branches of the crown partly preserved in life position (Fig. 1A and fig. S1) (1). The horizontal position of the seven molds of branches in the pumice 1 to 3 m above its base and remnants of olive leaves and twigs covered by the pumice further support our claim that the olive was buried alive. We obtained a series of radiocarbon dates from a defined sequence of tree rings in the branch that can be wiggle-matched to the latest radiocarbon calibration curve IntCal04 (Fig. 1B). One problem with olive trees is that they form irregular, barely visible rings. We thus used x-ray tomography to identify 72 rings in a section of the branch with preserved bark (Fig. 1C) (1). We divided the section into four consecutive groups

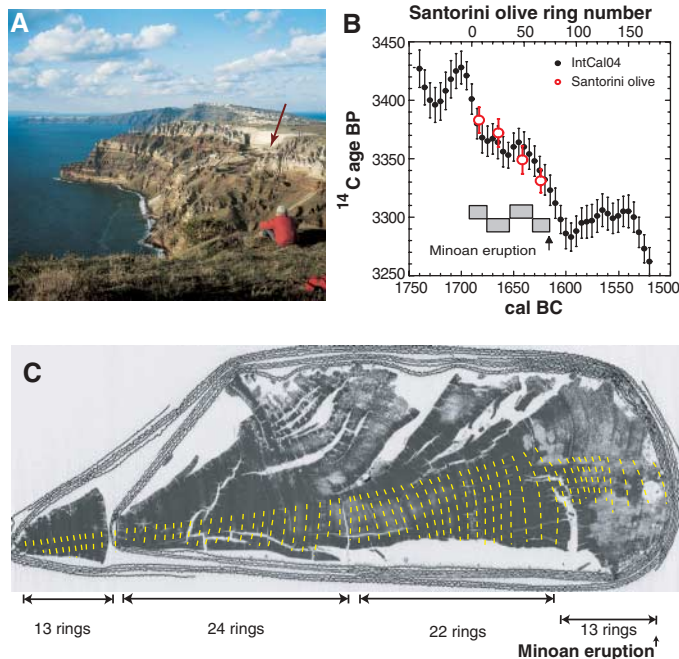


Fig. 1. (A) The arrow marks the site where an olive tree was found buried under the <60-m-thick pumice layer of the Minoan eruption on top of the caldera wall on Thera. (B) ^{14}C dates of the four segments of the olive section wiggle-matched to the calibration curve IntCal04. The relative position of the segments in the branch is indicated by the bars. BP, years before the present. Error bars indicate 1 SD. (C) X-ray tomography of a section of the olive branch, with yellow lines indicating identified growth rings. The four dated segments are indicated by arrows.

of rings and obtained ^{14}C dates for each (1). Using the calibration program OxCal (7), we determined the calibrated age range of the outermost ring to 1621–1605 B.C. (1 σ , 68% confidence) or 1627–1600 B.C. (2 σ , 95% confidence). Even when we take into account an uncertainty of 50% in the ring count, potentially caused by growth irregularities of olive, these limits are increased by only a decade (table S2). We also excluded a significant local offset of the ^{14}C ages by volcanic CO_2 , because then it would be impossible to match our ^{14}C sequence anywhere to the shape of the calibration curve (Fig. 1C).

Our wiggle-matched sequence adds to the already strong evidence of an eruption date in the late 17th century B.C. It is the first accurately (close to annually) defined sequence based on an object buried alive by the eruption. A date around 1520 B.C. or later, as assumed by some archaeologists working with Egyptian contexts, is not consistent, even within 3 σ (99.7% confidence), with our result, which consequently suggests a flaw in either their linkage of the Aegean to the Egyptian chronology or in the chronology itself for the relevant time range.

References and Notes

- Materials and methods available as supporting material on Science Online.
- C. G. Doumas, *The Wall-Paintings of Thera* (The Thera Foundation, Athens, 1992).
- M. Bietak, *Science Versus Archaeology: Problems and Consequences of High Aegean Chronology, in The Synchronization of Civilizations in the Eastern Mediterranean in the Second Millennium B.C.*, M. Bietak, Ed. (Vienna, 2003), pp. 23–33.
- S. W. Manning, *A Test of Time: The Volcano of Thera and the Chronology and History of the Aegean and East Mediterranean in the Mid Second Millennium B.C.* (Oxbow Books, Oxford, 1999).
- C. B. Ramsey, S. W. Manning, M. Galimberti, *Radiocarbon* **46**, 325 (2004).
- T. Pfeiffer, thesis, Aarhus University (2003).
- C. Bronk Ramsey, J. van der Plicht, B. Weninger, *Radiocarbon* **43**, 381 (2001).
- We thank H. Jannopoulou-Akyla and G. Nomikos for providing recent olive material for comparison; I. Pfeifer-Schäller for providing the x-ray tomography imagery; S. Manning, A. McBirney, R. Wilson, and H. Loft Nielsen for comments; and G. Nielsen and M. Dybdahl for technical assistance.

Supporting Online Material

www.sciencemag.org/cgi/content/full/312/5773/548/DC1

Materials and Methods

Table S1

References

18 January 2006; accepted 23 March 2006

10.1126/science.1125087

¹Department of Earth Sciences, University of Aarhus, DK-8000 Aarhus, C.F. Moellers Allé 1120, Denmark. ²Heidelberg Akademie der Wissenschaften, Institut für Umweltpophysik, Im Neuenheimer Feld 229, D-69120 Heidelberg, Germany. ³Institute of Botany, Hohenheim University, D-70593 Stuttgart, Germany. ⁴Accelerator Mass Spectrometry ^{14}C Dating Centre, Department of Physics and Astronomy, University of Aarhus, DK-8000 Aarhus C, Denmark.

*To whom correspondence should be addressed. E-mail: walter@geo.au.dk

Santorini Eruption Radiocarbon Dated to 1627-1600 B.C.

Walter L. Friedrich, Bernd Kromer, Michael Friedrich, Jan Heinemeier, Tom Pfeiffer and Sahra Talamo

Science **312** (5773), 548.

DOI: 10.1126/science.1125087

ARTICLE TOOLS

<http://science.sciencemag.org/content/312/5773/548>

SUPPLEMENTARY MATERIALS

<http://science.sciencemag.org/content/suppl/2006/04/25/312.5773.548.DC1>

RELATED CONTENT

<http://science.sciencemag.org/content/sci/312/5773/565.full>
<http://science.sciencemag.org/content/sci/312/5773/508.full>
<file:/contentpending:yes>

REFERENCES

This article cites 2 articles, 0 of which you can access for free
<http://science.sciencemag.org/content/312/5773/548#BIBL>

PERMISSIONS

<http://www.sciencemag.org/help/reprints-and-permissions>

Use of this article is subject to the [Terms of Service](#)